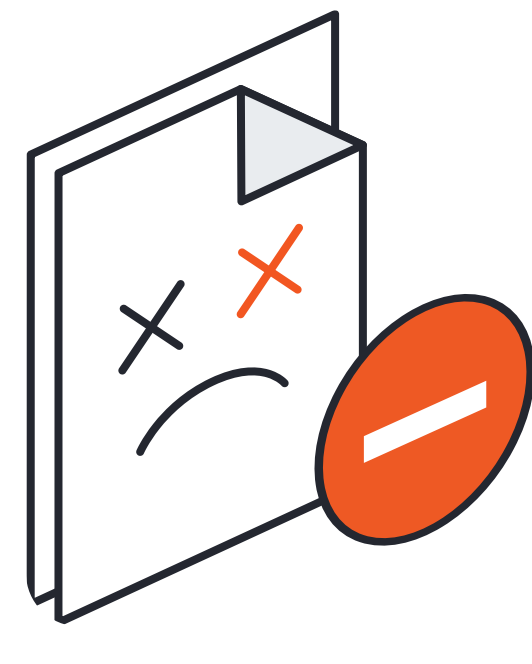
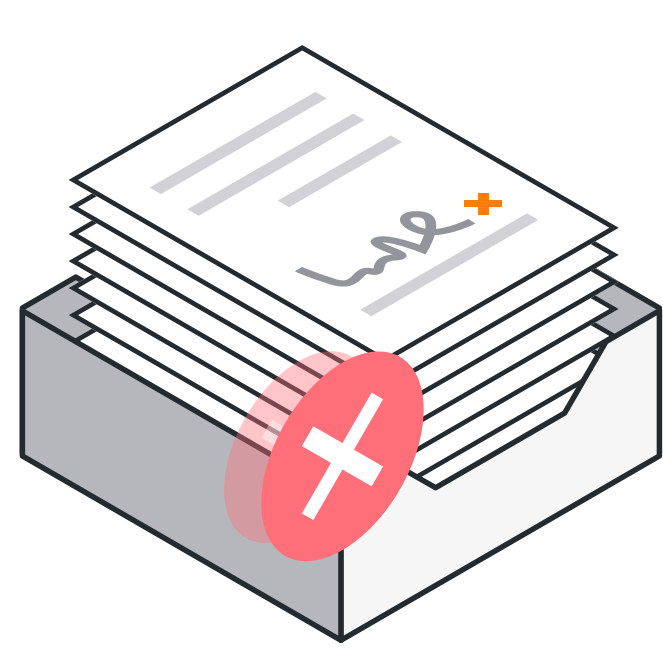


Expenses without the stress, care without compromise

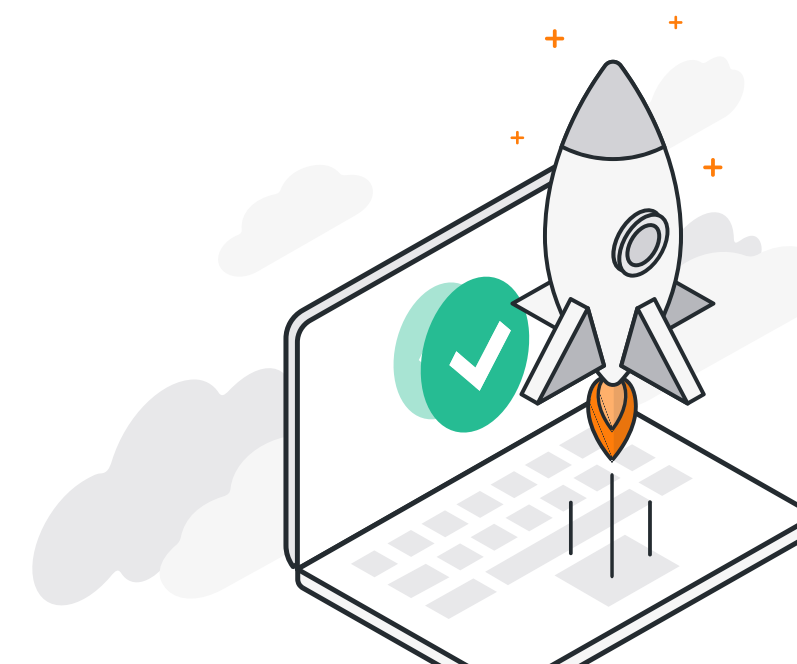
Your team always has 100 things to do.



Manual expense management doesn't have to be one of them.



Soldo gives finance teams **more control**, and care staff more **freedom**.



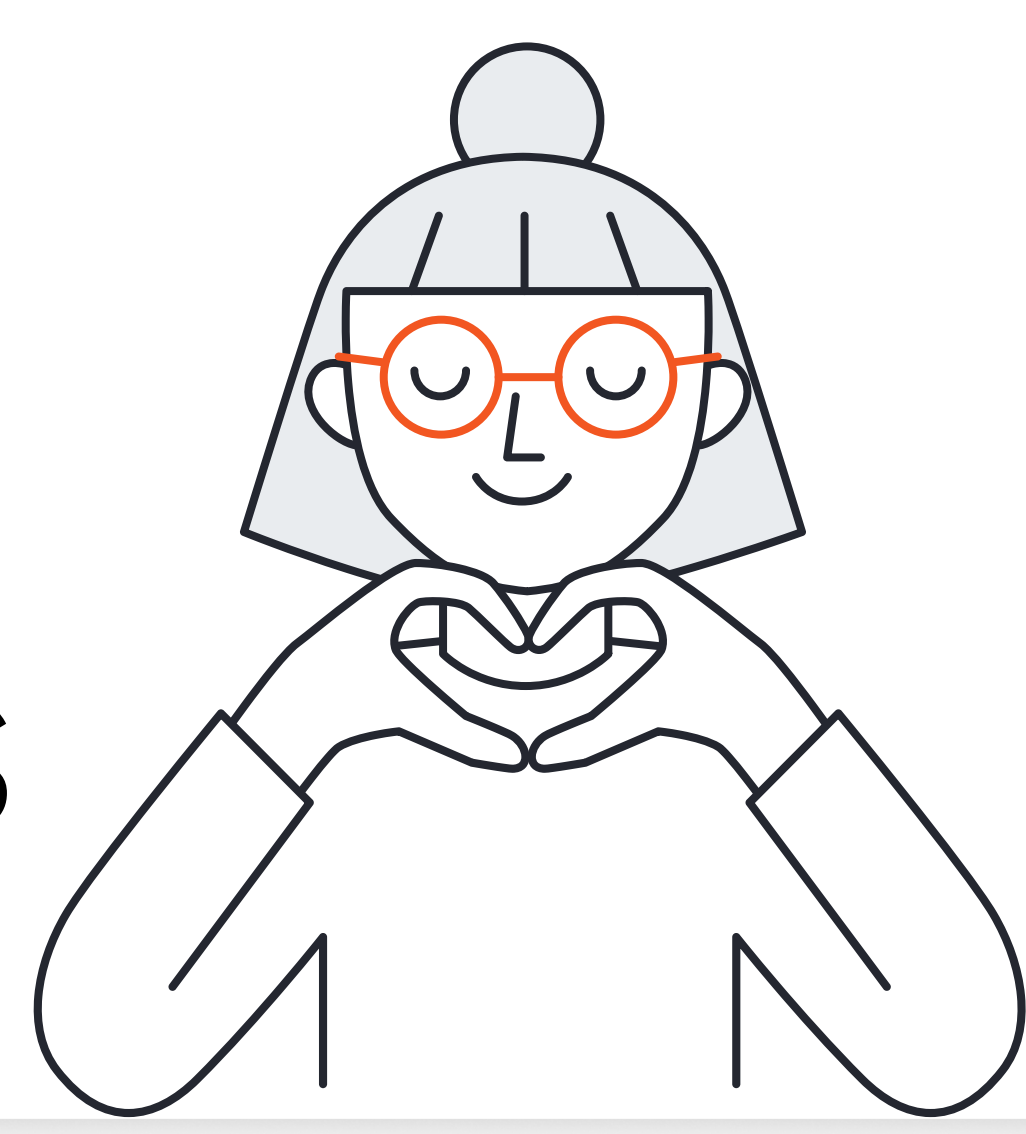
Demand for social care is rising every year. And there aren't enough carers to do it. There are currently 165,000 job vacancies for carers (up 52% from 2020). **For social care providers and carers, the pressure is high.** There's no quick fix for every challenge facing the sector – but implementing the right technology will lay the foundation for ongoing success.

An expense management platform like Soldo is part of this. **Soldo simplifies tedious expense reconciliation and enables powerful insight into spending.**



4

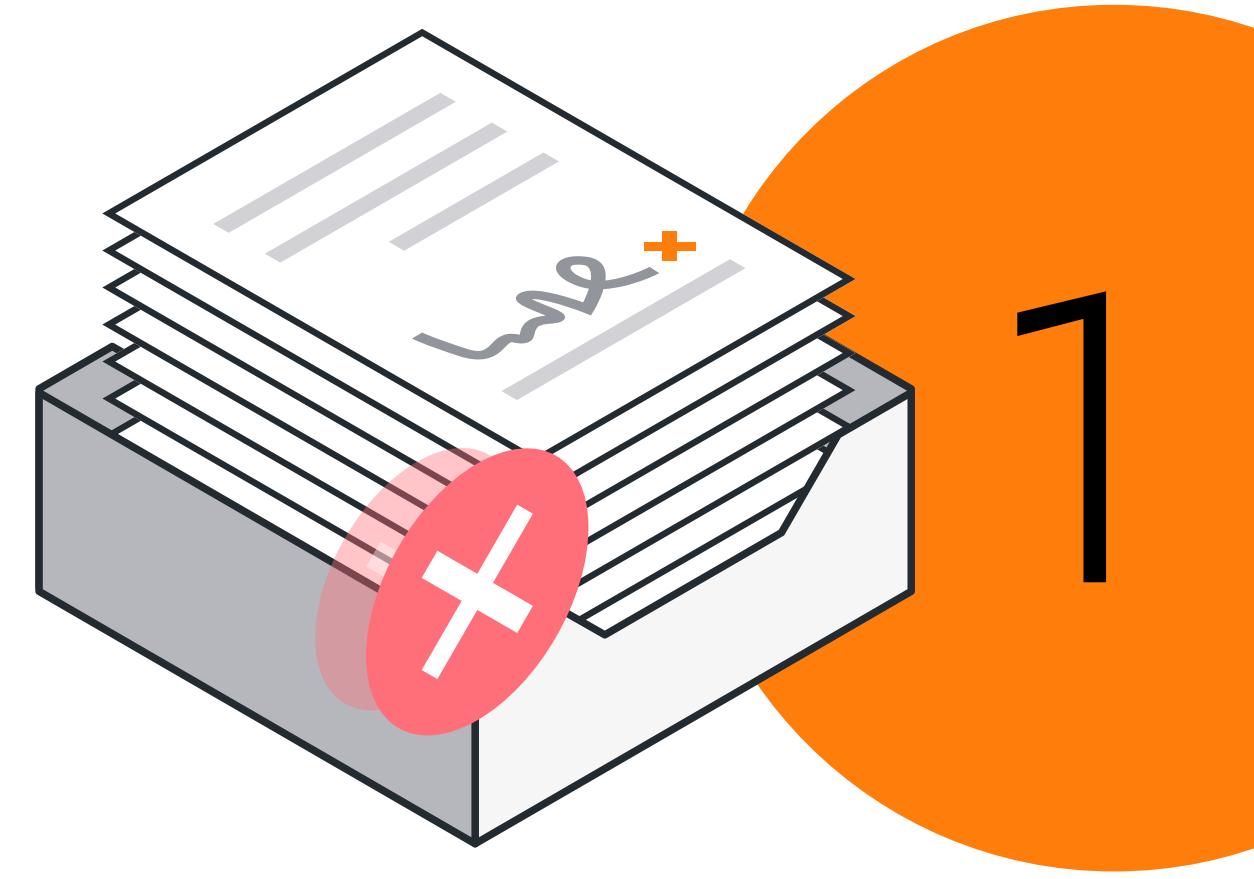
ways Soldo supports social care providers



Tight grip on weekly expenditure

Social Care sector spend is complicated. General patient costs (like hairdressing or podiatry) are often paid for by you and then invoiced back to service users (or next of kin).

Soldo makes things simple. Our company cards give you **control over what is being spent**, by who, and where. With our expense management platform, you have **real-time visibility** of every budget, balance, and transaction.



1



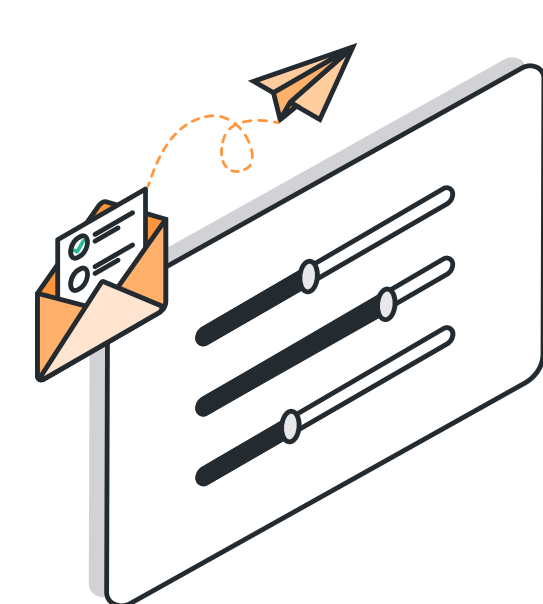
Instant, controlled access to money

Petty cash and shared cards create complexity for finance teams. And these mechanisms can be easily manipulated. With Soldo virtual and physical company cards, you give your workforce controlled access to care facility money. This empowers them to buy what they need when needed, and you remain in control.

Set spending rules and limits, automatic top-ups and low balance alerts, or instantly freeze cards as needed. Staff can use the Soldo mobile app **to capture receipts at point of purchase**, adding notes and tags for every transaction.



2



Simplified expense management

The Social care sector needs to modernise. It's riddled with outdated and inefficient processes reliant on paperwork and spreadsheets. Soldo won't fix everything – but it will dramatically simplify expense management.

Soldo automates 80% of your financial processes, bringing them together in a single, user-friendly platform. **Eliminate piles of paperwork**, automate tedious tasks, and automatically enforce your spending policy.



3

Advanced reports and accounting integrations

More than ever, your finances are under scrutiny. And it's hard to get an accurate and real-time view of incomings and outgoings. Soldo's advanced reports and accounting integrations join up all your financial data, so you can make better financial decisions and improve your financial planning.

Connect Soldo with accounting software such as Xero, Sage, QuickBooks, and more to seamlessly reconcile transaction. **Run real-time transaction reports** across every care facility for a bird's eye view, or export transactions by individual staff member for granular detail.



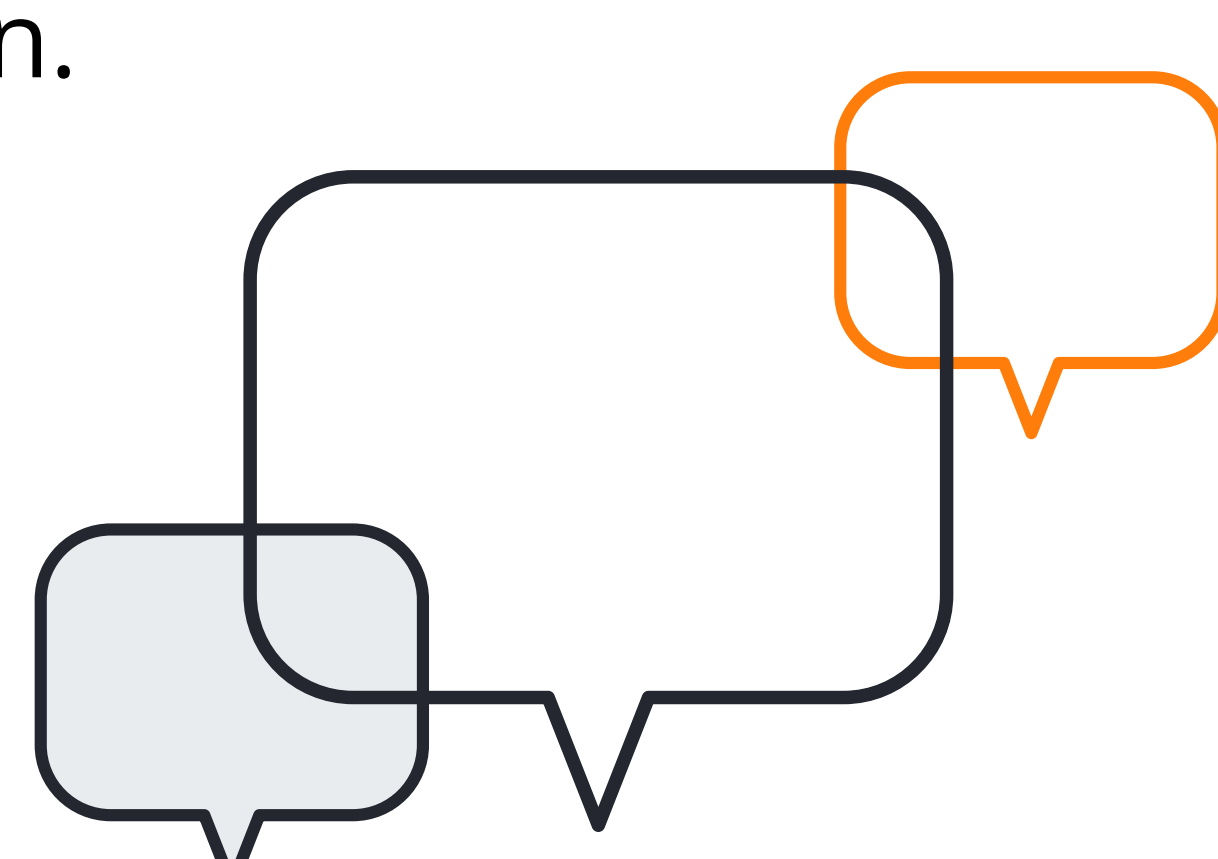
4

"Soldo has been an absolute godsend for us. I found it really easy to get up and running. I did it all within an afternoon. Got it set up, ordered my cards, put money into my account, and it was all really, really easy."

Diana Valentim, Finance Assistant,
Cairn Mhor

"Our finance admin manager has never been happier."

Simon Allen, Finance Director & CEO,
Age UK Bath and Somerset



Soldo tackles these issues head-on. Let us make expense management a little easier, while you take care of everyone else.

